

# Franklyn James



## Basin Approach

Limehouse, London, E14 7JA

Asking Price £525,000

Located in a very sought after development is this fantastic two double bedroom, two bathroom apartment that has views of Limehouse Marina. Offered on either a furnished or unfurnished basis, the property boasts spacious living throughout, private balcony and an allocated parking space. Basin Approach is located within a very short walk to Limehouse DLR making it an ideal home for professionals working in the City and Canary Wharf.

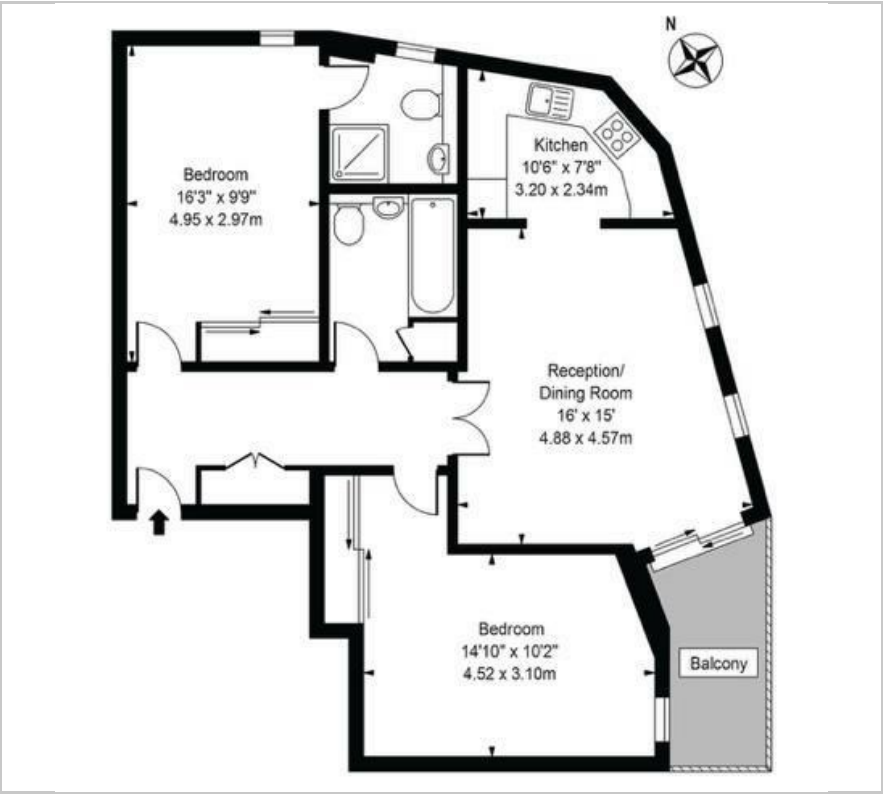
- Two double bedrooms
- Two bathrooms
- Private balcony
- Allocated parking space
- Views of Limehouse Marina
- Walking distance to Limehouse DLR

### Viewing

Please contact our Limehouse Sales Office on 02077911777 if you wish to arrange a viewing appointment for this property or require further information.



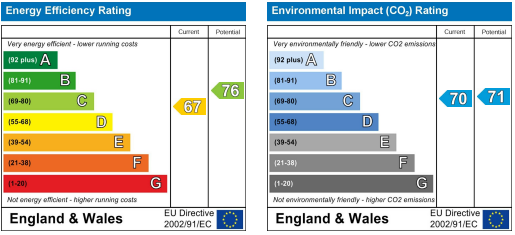
Floor Plan



Area Map



Energy Efficiency Graph



These particulars, whilst believed to be accurate are set out as a general outline only for guidance and do not constitute any part of an offer or contract. Intending purchasers should not rely on them as statements of representation of fact, but must satisfy themselves by inspection or otherwise as to their accuracy. No person in this firm's employment has the authority to make or give any representation or warranty in respect of the property.